

tipco»

Retainers

For 5/16" Socket  
Head Screws

B

A

C

Wedge  
Shaped

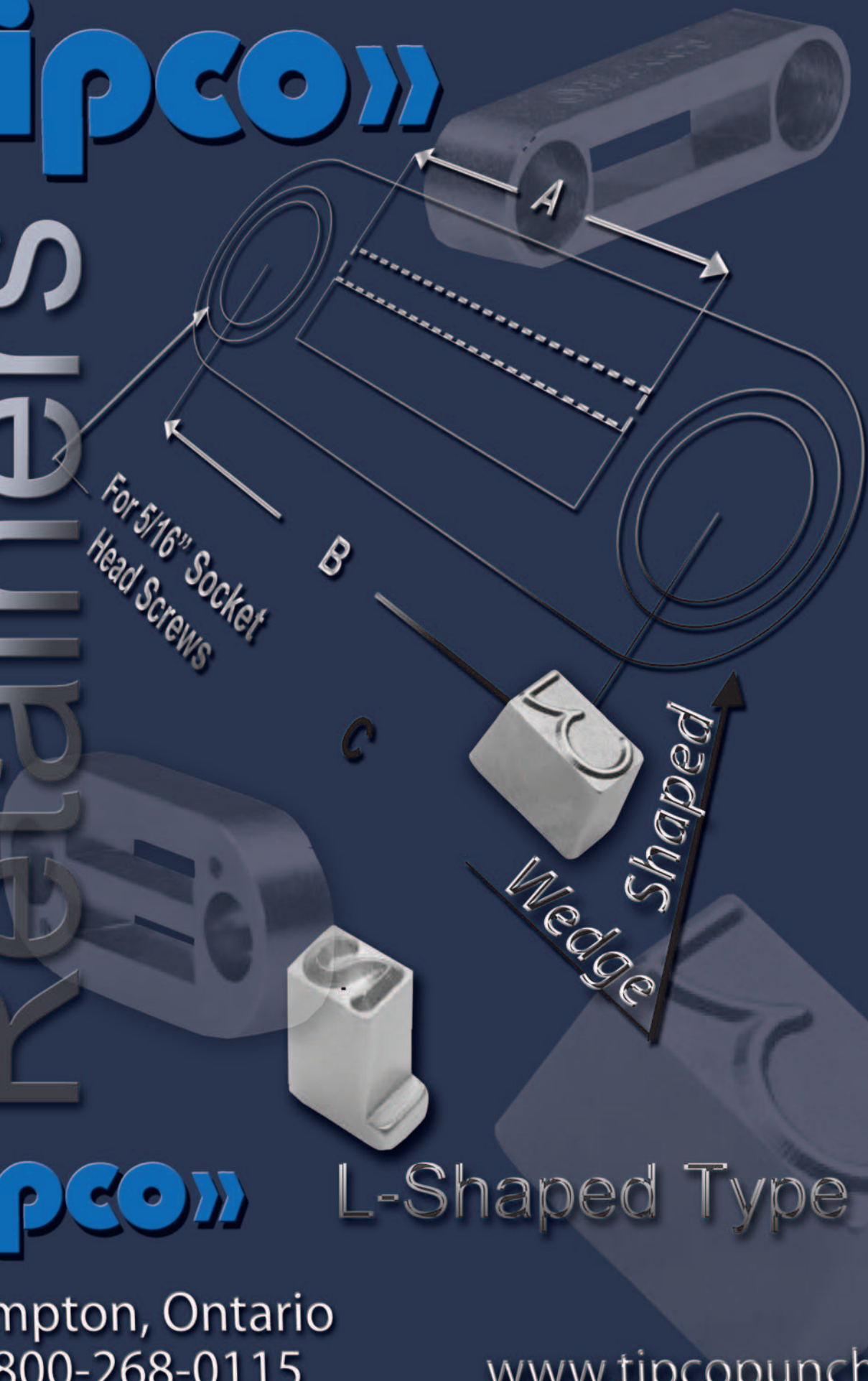
tipco»

L-Shaped Type

Bottoming Marker

Brampton, Ontario  
1-800-268-0115

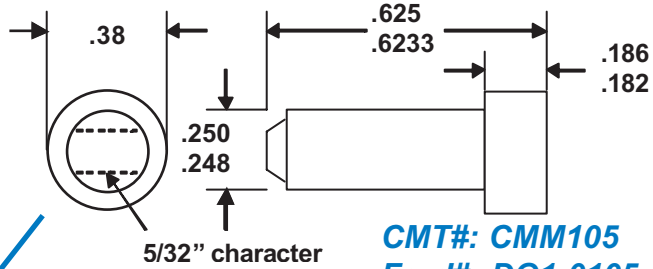
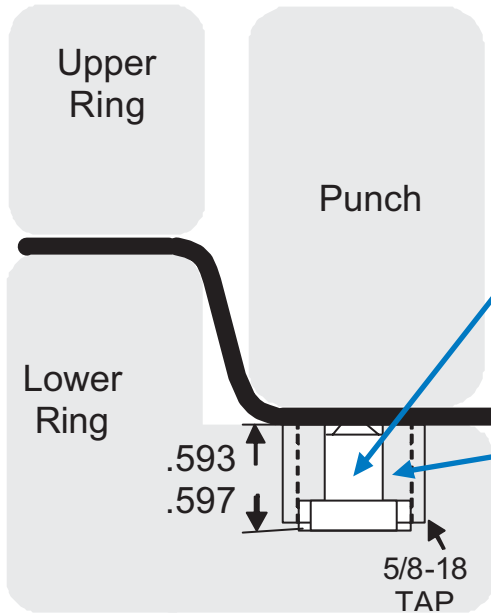
[www.tipcopunch.com](http://www.tipcopunch.com)



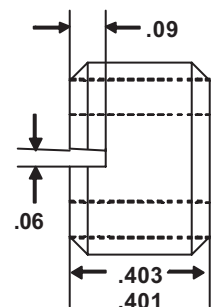
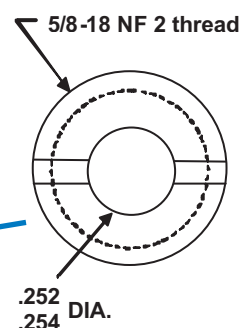


# Bottoming Marker

Typical installation of CMM104 and CMM105 bottoming marker. For use in stamping presses.

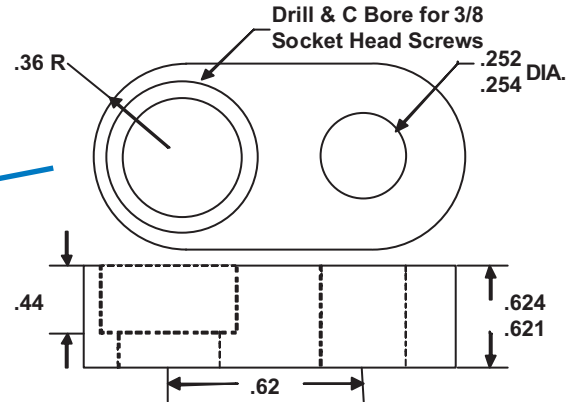
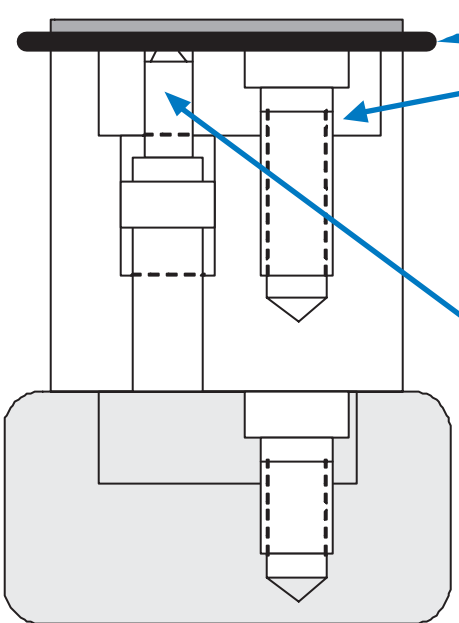


**CMT#: CMM105**  
**Ford#: DG1-0105**  
**DCX#: 21-460-0079**

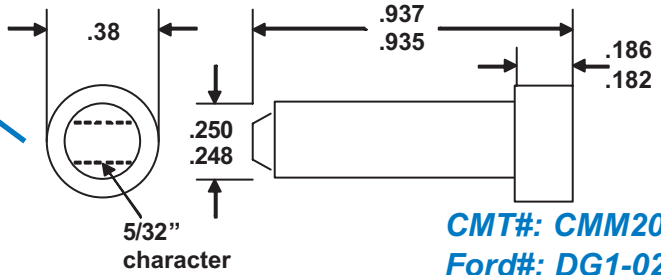


**CMT#: CMM104**  
**Ford#: DG1-0104**  
**DCX#: 21-912-0005**

Typical installation of CMM201 and CMM202 bottoming marker. For use with forming dies having spring or air pads.



**CMT#: CMM201**  
**Ford#: DG1-0201**



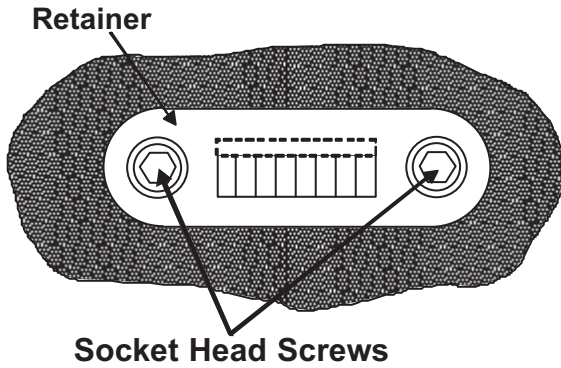
**CMT#: CMM202**  
**Ford#: DG1-0202**

visit [www.tipcopunch.com](http://www.tipcopunch.com)

**TIPCO, INC.**  
 1 Coventry Road  
 Brampton, Ontario L6T4B1

TEL: 800-268-0115  
 FAX: 905-791-4917

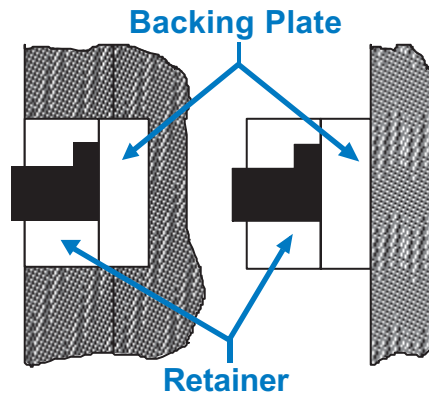
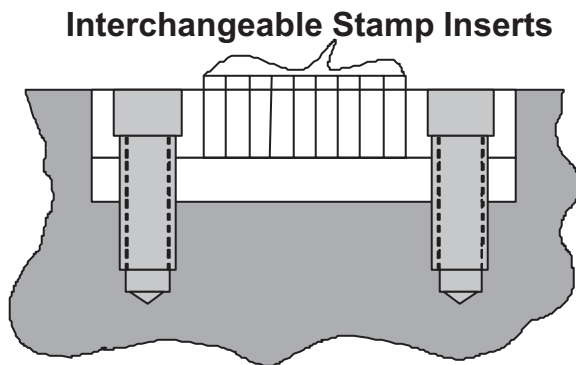
# tipco» Installation



## Formula For Determining Gap Width, Type Size, or Type Quantity:

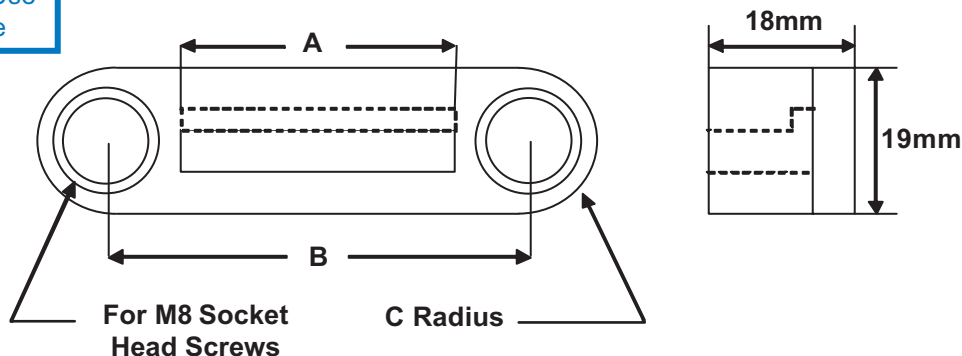
Gap Width of Retainers (represented by "A" in dwgs.)  
 $\div$  Type Width\*\*\*  
 =Quantity of Type Retainer Can Hold

\*\*\*Please note that type width is determined by desired character size\*\*\*



The retainer and backing plate set can be placed in a pocket or on a flat surface.

### Metric Retainers For Use With L-Shaped Type



Retainer	A	B	C	Type Style (holder capacity)
CMMRN18R1900	40mm	60mm	9.5mm	CMM018 (10)
CMMRN18R7810	48mm	68mm	9.5mm	CMM018 (12)

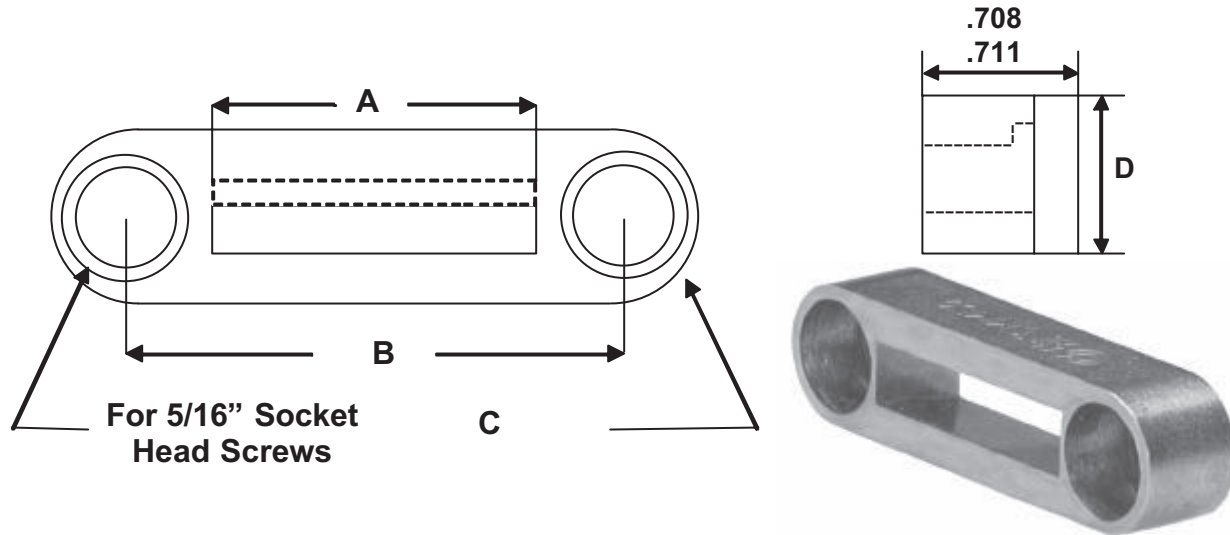
**TIPCO, INC.**

TOLL-FREE: 1-800-268-0115

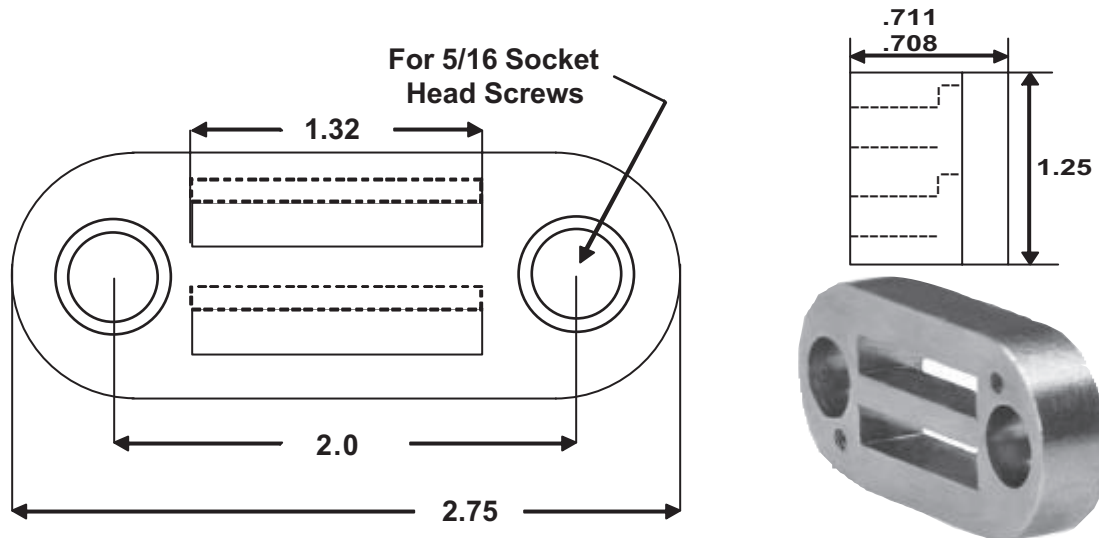
E-MAIL: sales@tipcoinc.com



# Retainers for L-Shaped Type



Retainer	A	B	C	D	Type Style (holder capacity)
CMM101	1.31"	2.00"	.31"	.62"	CMM103 (7), CMM164 (8), CMM512 (8), CMM518 (8)
CMM510	1.64"	2.31"	.31"	.62"	CMM164 (10), CMM512 (10), CMM518 (10)
CMM412	2.25"	2.94"	.38"	.75"	CMM103 (12), CMM125 (18)
CMMRN18	1.10"	2.00"	.38"	.75"	CMM018 (7)



**CMM106/CMM107** (retainer & backing plate set)  
holds (8) in each row of CMM512, CMM164, CMM518, and (7) in each row of CMM103

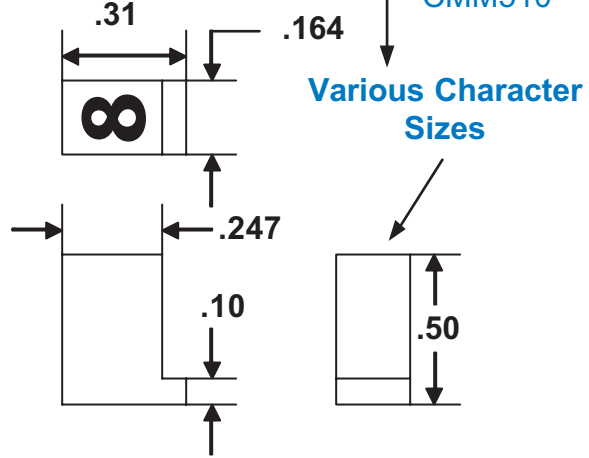


# L-Shaped Type

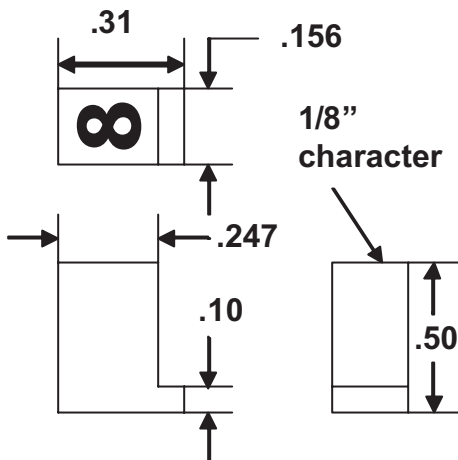


**CMM518**-3/16" character  
**CMM164**-5/32" character  
**CMM512**-1/8" character

Fits retainers  
 CMM101,  
 CMM106,  
 CMM510



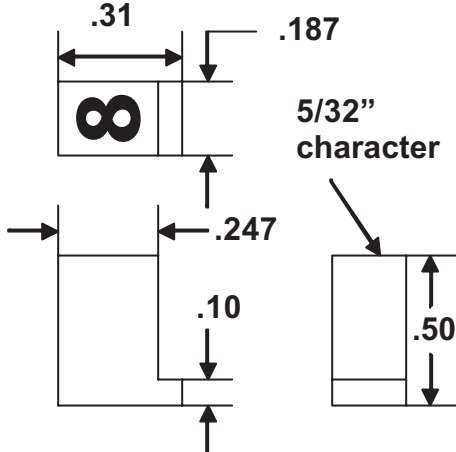
**CMM018** -1/8" character  
 Fits retainers CMMRN18,  
 CMMRN18R1900, CMMRN18R7810



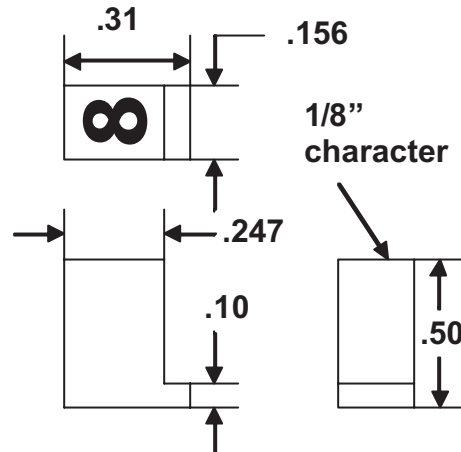
## MULTI-CHARACTER SEGMENT DIES AVAILABLE

CMT can manufacture any configuration of multi-character stamps for quick and easy change over of part numbers, or codes.

**CMM103** -5/32" character  
 Fits retainers CMM101, CMM412, CMM106

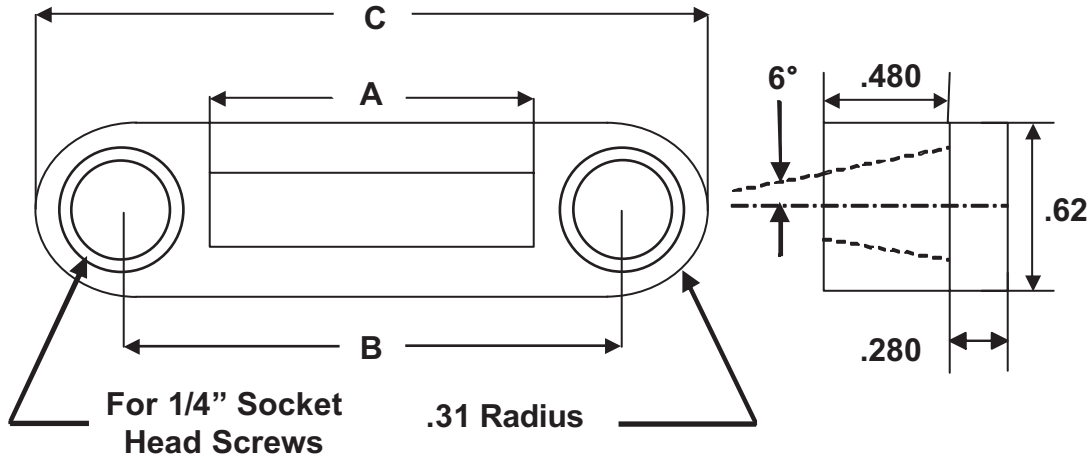


**CMM125** -1/8" character  
 Fits retainers CMM412





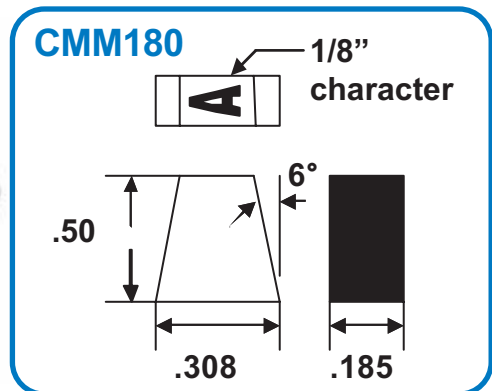
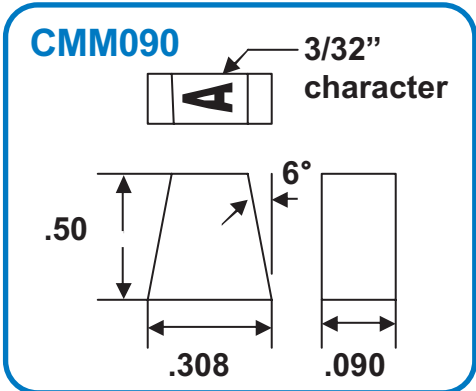
# Retainers for Wedge Shaped Type



Retainer	A	B	C	Type Style (holder capacity)
CMM3	.562"	1.00"	1.5"	CMM180 (3), CMM090 (6)
CMM5	.936"	1.38"	1.88"	CMM180 (5), CMM090 (10)
CMM7	1.310"	1.75"	2.25"	CMM180 (7), CMM090 (14)
CMM9	1.683"	2.25"	2.75"	CMM180 (9), CMM090 (18)

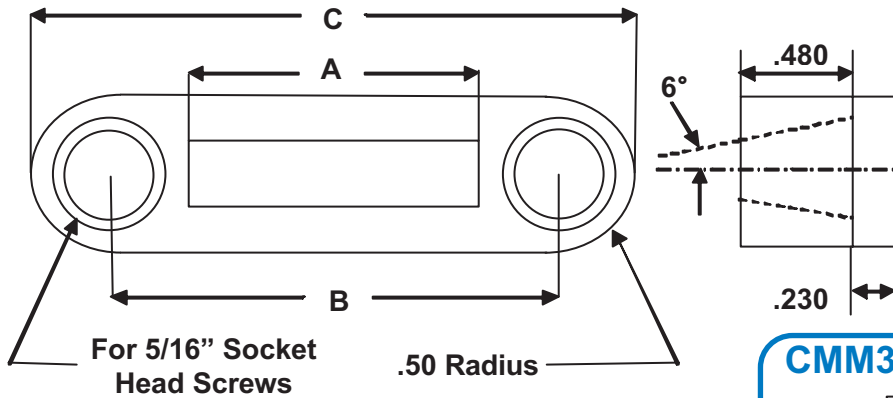


**From A,B,C To Your Logo, CMT Can Engrave Any Marking Legend Onto Custom Die Segments For Use In A Stamping Press Or Retainer System.**

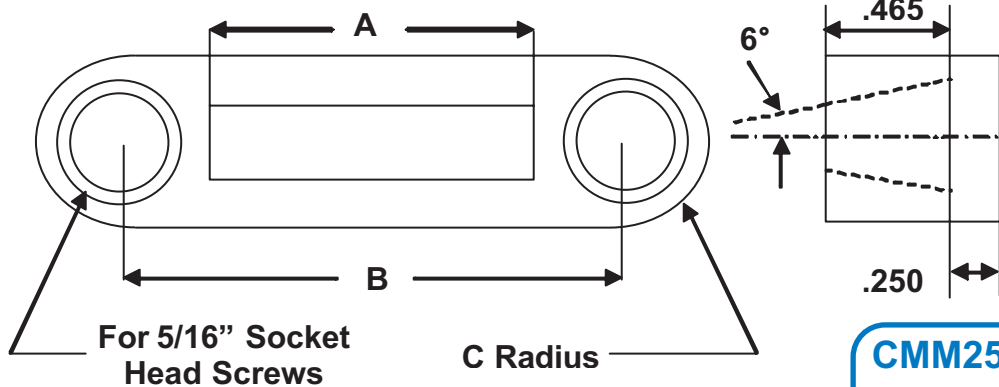
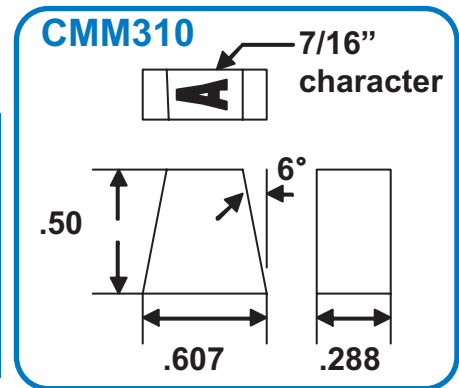




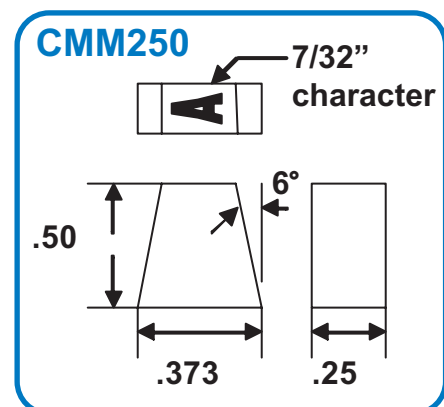
# Retainers for Wedge Shaped Type



Retainer	A	B	C	Type Style (holder capacity)
CMM301	1.44"	2.00"	2.94"	CMM310 (5)
CMM306	1.73"	2.50"	3.25"	CMM310 (6)
CMM308	2.31"	3.06"	3.81"	CMM310 (8)



Retainer	A	B	C	Type Style (holder capacity)
CMM50	1.25"	1.81"	.31"	CMM250 (5)
CMM54	2.265"	2.88"	.38"	CMM250 (9)



visit [www.tipcopunch.com](http://www.tipcopunch.com)

**TIPCO, INC.**

TOLL-FREE: 1-800-268-0115

E-MAIL: [sales@tipcoinc.com](mailto:sales@tipcoinc.com)

**TIPCO INC.**

1 Coventry Road  
Brampton, Ontario  
L6T 4B1  
Canada

Tel. (905) 791-9811  
Fax: (905) 791-4917  
1-800-268-0115  
E-mail: [sales@tipcoinc.com](mailto:sales@tipcoinc.com)

---

**TIPCO PUNCH INC.**

4357 Park Drive  
Suite "H"  
Norcross, Georgia  
30093  
USA

Tel. (770) 564-0032  
Fax: (770) 564-3726  
1-800-544-8444  
E-mail: [sales@tipcopunch.com](mailto:sales@tipcopunch.com)

---

**TIPCO PUNCH INC.**

6 Rowe Court  
Hamilton, Ohio  
45015  
USA

Tel. (513) 874-9140  
Fax: (513) 874-0204  
1-800-544-8444  
E-mail: [sales@tipcopunch.com](mailto:sales@tipcopunch.com)

---

**TIPCO de MEXICO  
S.A. de C.V.**

Acc. V1, No. 8  
Fraccionamiento Industrial  
Benito Juarez  
Queretaro, Qro., 76120  
Mexico

Tel.: +52 44 2210 5041  
+52 44 2210 5042  
Fax: +52 44 2210 5043  
E-mail: [tipcomx.com](mailto:tipcomx.com)

---

**TIPCO CIMA srl**

Via De Amicis 75  
20040 Colnago (MI)  
Italy

Tel: +39 (039) 688-5315  
Fax: +39 (039) 609-5779  
E-mail: [tipcocimasrl@libero.it](mailto:tipcocimasrl@libero.it)

---